

Introducing the...

# ecologic 250



Specification sheet

Canteen

Drying Room

Lockers

Toilet

**SAVE**

on your site's  
running costs and Carbon  
Footprint

The EcoLogic 250 will provide your site with a canteen, toilet and drying room with lockers in one 16ft instant start welfare unit.

Powered by hybrid LPG generator and solar.



**Oasis**

## Why choose our EcoLogic 250?

If you require instant start welfare facilities, but don't have space on site for one of our 24ft or 32ft units, the EcoLogic 250 is the solution.

This eco-friendly, self-contained welfare unit scores high on the following environmental and operational benefits.

## Environmental features

- Low CO<sub>2</sub> emissions = reduced carbon footprint
- Hybrid LPG power system
- Renewable energy from solar power
- Water saving 'instant shut off' taps
- Carbon Statements available for each hire

## Considerate neighbours

- Limited generator running hours during the day (none overnight)
- Silent overnight heating & drying room
- Site specific generator curfews available
- Extra points for Considerate Constructors

## Staff wellbeing

- Pleasant working environment
- Mainly silent-running welfare
- Easy to use with minimal user intervention
- Programmable heating system

## Health & Safety

- Super silent generator = low noise during limited operation
- 24/7 drying room (silent overnight)
- Low level lifting eyes & built-in levelling legs

## Cost saving

- Economical hybrid power system
- Improved energy efficiency
- Fully insulated with double glazed windows
- PIR sensor-controlled LED lighting
- Avoid implications of red diesel tax relief changes by using LPG



Canteen and Kitchen Facilities



Drying Room with Lockers

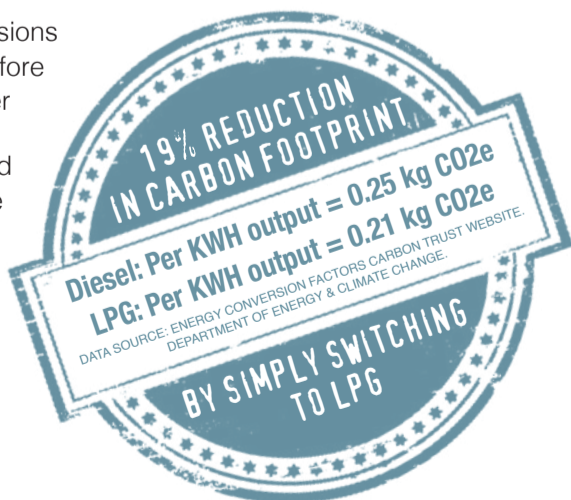


Canteen Area

Toilet and Hand Wash Basin

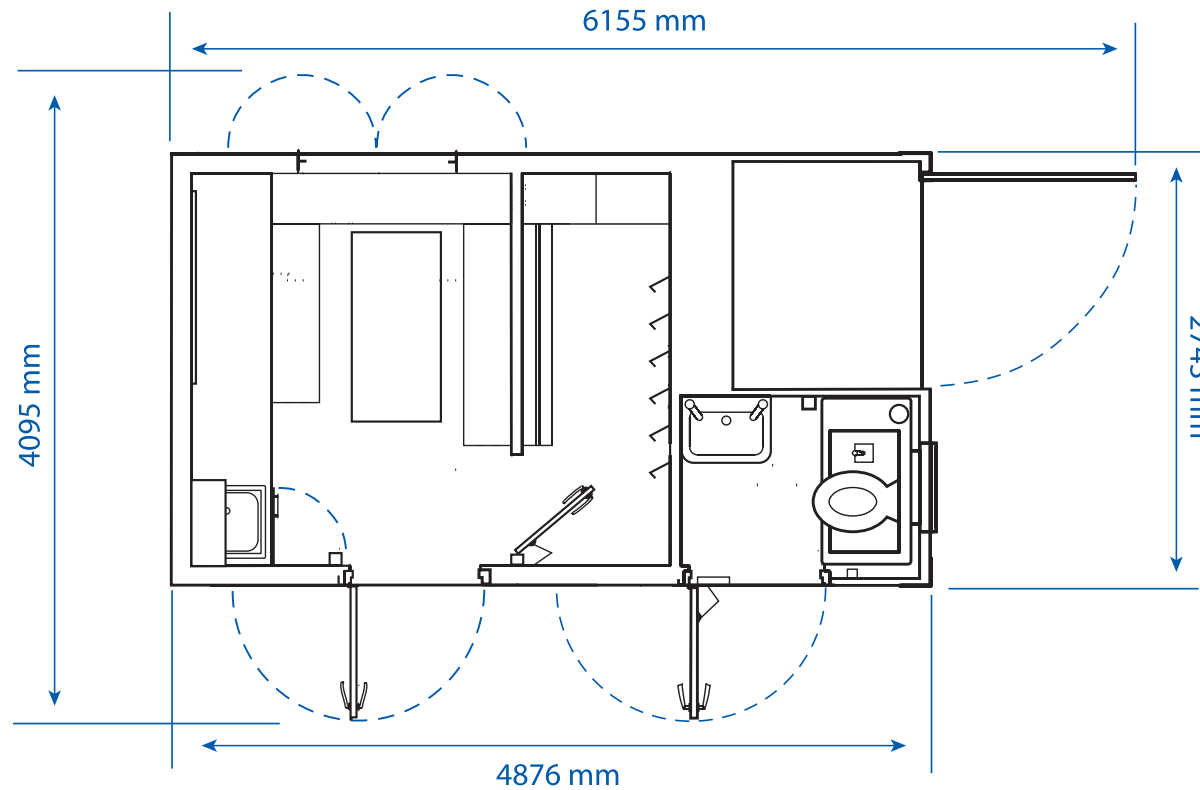
## Reduced Carbon Footprint for LPG vs diesel

- LPG has lower carbon emissions compared with diesel, therefore the Carbon Footprint is lower
- No risk of diesel spillage and contamination of water table
- No particulates in exhaust emissions
- No risk of fines for diesel spillage
- Non-carcinogenic



## Specification

Unit size.....	4.88m x 2.74m (16' x 9")
Operational area .....	6.16m x 4.1m (20' x 13' 6")
Height (Levelling legs closed) .....	2.5m
Weight .....	5 Tonnes
Water capacity .....	400ltr main tank + 2 x 20ltr drinking water containers
LPG .....	Max storage 4 x 47kg cylinders
Rate of energy conversion .....	135grams of LPG per kW/H (average)
Generator .....	5.8kVA LPG fuelled (0.8 power factor)
Water heater.....	LPG fuelled Oasis heater
Additional equipment .....	Furniture, fire extinguisher, kettle, microwave oven and notice board
Toilet.....	Flushing toilet and hand wash basin



## Useful points to remember

### Terms of hire

- Construction Plant-hire Association Model Conditions – No other Terms will be accepted without prior written agreement from Advanté.
- The EcoLogic 250 is non-mechanical plant.

### Daily checks

- The client is responsible for the required daily checks on the generator, including engine oil as per manufacturer's recommendations. This is normal practice with any mechanical plant.
- Any damage arising from failure to carry out the checks will be charged.

### Damage

- Damage and shortages will be charged to the client.

### Levelling

- The unit will be levelled upon delivery, and the client is responsible for maintaining the unit in a level position at all times. Failure to do so could result in engine damage.

### Permissible load on the unit

- Available power after appliances and services is 500 Watts for client use. Drawing or trying to draw more than this will damage the generator.

### LPG

- The client is responsible for changing the bottles as required; space is provided for the storage of up to two additional bottles if needed.

### Canteen electrical equipment

- Both the microwave and kettle within the unit will be delivered to site PAT tested.

### Water refills

- These are the client's responsibility, but can be arranged by Advanté if required. (Price on application.)

### Waste

- Only normal toilet waste must be put in the toilet. Any contamination of the waste could result in additional disposal charges for the client.

### Instruction Manual

- Full instructions on how to get the best from your unit and its operation can be found in the unit.