

SOLAR ecologic | 7000



INNOVATION OF THE YEAR
(NON-CONTRACTOR)



INNOVATION



BEST USE OF TECHNOLOGY

Large Office • Drying Room • Two Toilets



NEW EcoLogic® Solar hybrid technology

Supports net-zero carbon targets

Mainly silent instant start welfare

Maximised solar gain all year round

UP TO
100%
RENEWABLE
ELECTRICAL
POWER



Renewable



Solar Charging



Warm & Dry



Low Carbon



Low Noise



Inclusive



Oasis®

Large Office • Drying Room • Two Toilets



How will this Oasis® instant start welfare unit benefit **your** site?

Your health & safety



- Hot and cold temperature controlled water
- 24/7 drying room facilities
- Mainly silent-running welfare

Your wellbeing



- Pleasant work environment
- Intelligent telemetry system with remote monitoring and reporting for trouble-free welfare operation

Your carbon footprint



- Carbon saving with up to 100% electrical power from solar energy
- Solar gain achievable all-year-round

Your industry



- Low noise welfare = happy neighbours
- Quality welfare improves image of construction and attracts a diverse workforce

Your air quality



- NEW hybrid solar and LPG power system
- Minimal reliance on generator
- Super-low emission, no exhaust particulates

Your welfare costs



- Improved energy performance
- Reduced running costs through increased solar power

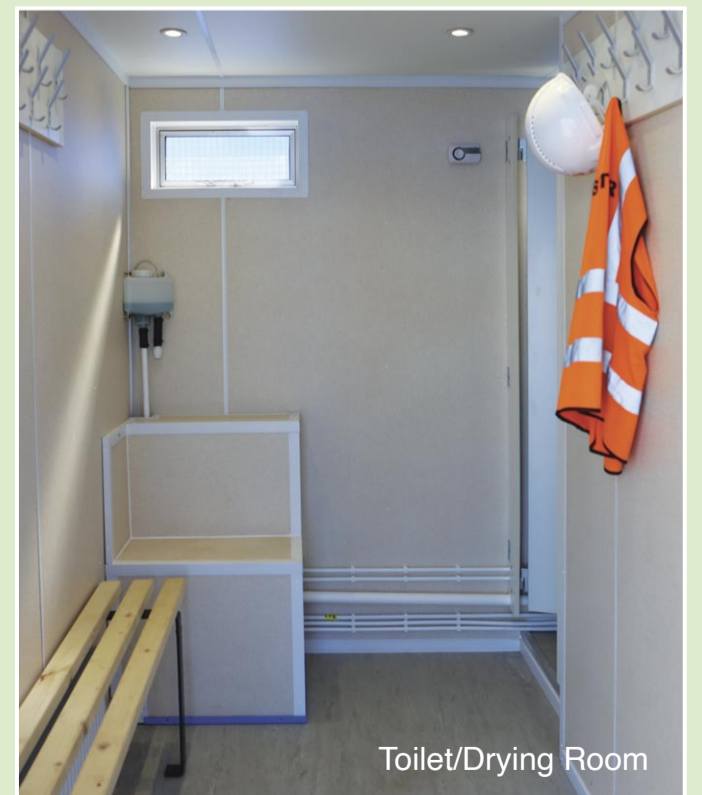
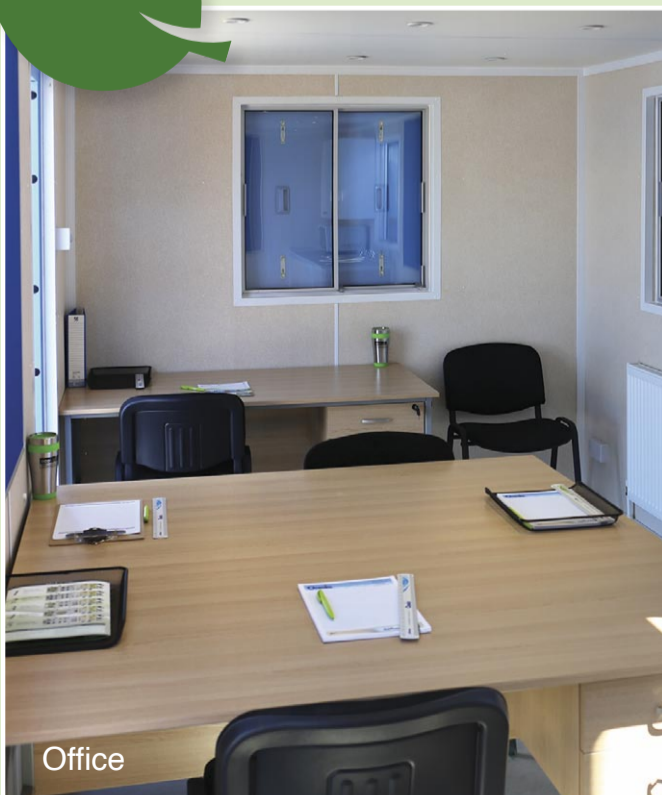


Specification

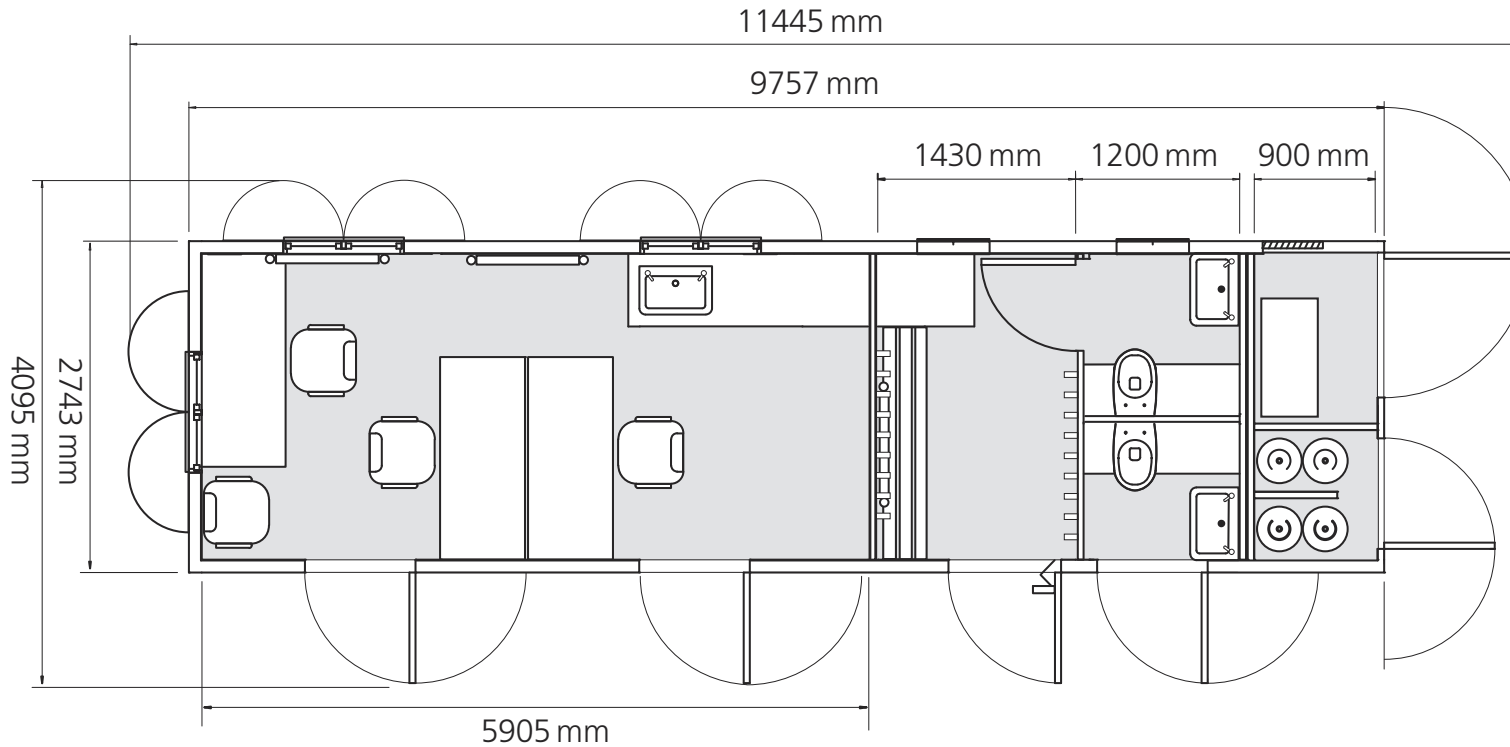
Unit size.....	9.75m x 2.7m (32ft x 9ft)
Operational area	11.44m x 4.09m (37.5ft x 13.5ft)
Height (Levelling legs closed)	2.6m
Weight	7 Tonnes
LPG	Max storage 4 x 47kg cylinders
Water capacity	400ltr main tank + 2 x 20ltr drinking water containers

Rate of energy conversion	66.31grams of LPG per kW/H (average)
Generator	5.8kVA LPG fuelled (0.8 power factor)
Water heater	LPG fuelled Oasis heater
Solar array.....	9 solar PV panels
Toilets.....	2 separate low-flush toilets
Additional equipment.....	Furniture, fire extinguisher, kettle, microwave oven and notice board

BioLPG
COMING SOON!



so much more than just welfare...



Useful points to remember

Terms of hire

- Construction Plant-Hire Association Model Conditions – No other terms will be accepted without prior written agreement from Advanté.
- The EcoLogic1700 Solar is non-mechanical plant.

Daily checks

- The client is responsible for the required daily checks on the unit. This is normal practice with any mechanical plant.
- Any damage arising from failure to carry out the checks will be charged.

Damage

- Damage and shortages will be charged to the client.

Levelling

- The unit will be levelled upon delivery, and the client is responsible for maintaining the unit in a level position at all times. Failure to do so could result in engine damage.

Permissible load on the unit

- Available power after appliances and services is 500 Watts for client use. Drawing or trying to draw more than this will damage the generator.

LPG

- The client is responsible for changing the bottles as required; space is provided for the storage of up to two additional bottles if needed.

Canteen electrical equipment

- The microwave and kettle with the unit will be delivered to site PAT tested.

Water refills

- These are the client's responsibility, but can be arranged by Advanté if required. (Price on application.)

Waste

- Only normal toilet waste must be put in the toilet. Any contamination of the waste could result in additional disposal charges for the client.

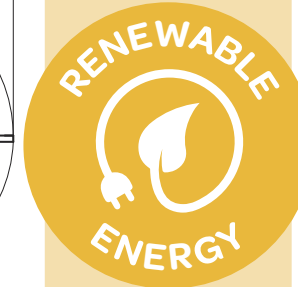
Instruction Manual

- Full instructions on how to get the best from your unit and its operation can be found in the unit.

Some facts and figures

99.5%

of electricity used is from solar or stored energy



Next step:
BioLPG heating

94%

reduction in carbon emissions



compared to diesel generator welfare unit

89%

reduction in running cost



compared to diesel generator welfare unit

4

United Nations sustainable development goals



- Affordable & clean energy
- Industry, innovation & infrastructure
- Responsible consumption & production
- Climate action

Data correct at time of going to press – Aug 2021

