

Introducing the...

ecologic 250



Specification sheet

Canteen

Drying Room

Lockers

Toilet

SAVE

on your site's
running costs and Carbon
Footprint

The EcoLogic 250 will provide your site with a canteen, toilet and drying room with lockers in one 16ft instant start welfare unit.

Powered by hybrid LPG generator and solar.



Oasis

Why choose our EcoLogic 250?

If you require instant start welfare facilities, but don't have space on site for one of our 24ft or 32ft units, the EcoLogic 250 is the solution.

This eco-friendly unit scores high on the following environmental and operational benefits.



Environmental features

- Low CO₂ emissions = reduced carbon footprint
- Hybrid LPG power system
- Renewable energy from solar power
- Water saving 'instant shut off' taps
- Carbon Statements available for each hire



Considerate neighbours

- Limited generator running hours during the day (none overnight)
- Silent overnight heating & drying room
- Site specific generator curfews available
- Extra points for Considerate Constructors

Staff wellbeing

- Pleasant working environment
- Mainly silent-running welfare
- Easy to use with minimal user intervention
- Programmable heating system

Health & Safety

- Super silent generator = low noise during limited operation
- 24/7 drying room (silent overnight)
- Low level lifting eyes & built-in levelling legs

Cost saving

- Economical hybrid power system
- Improved energy efficiency
- Fully insulated with double glazed windows
- PIR sensor-controlled LED lighting
- Avoid implications of red diesel tax relief changes by using LPG



REDUCED CARBON FOOTPRINT

Limited generator run time reduces carbon footprint

MAINLY SILENT RUNNING

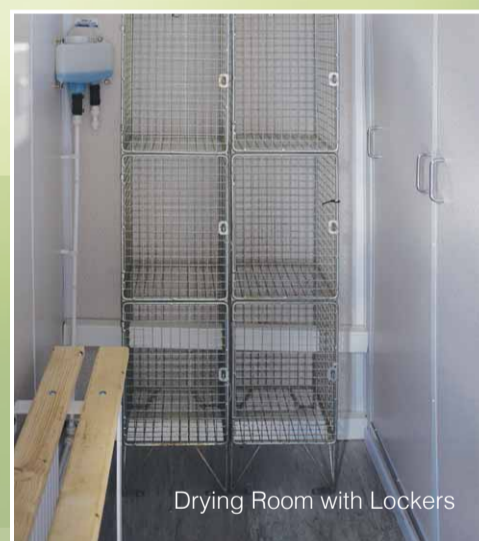
Enhancing community and work environment

IMPROVED AIR QUALITY

Low emissions contributing to improved air quality

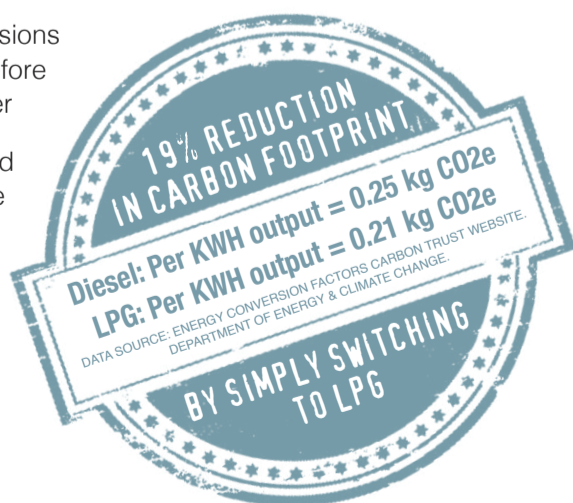
HYBRID SOLAR ENERGY

Reducing carbon and fuel costs



Reduced Carbon Footprint for LPG vs diesel

- LPG has lower carbon emissions compared with diesel, therefore the Carbon Footprint is lower
- No risk of diesel spillage and contamination of water table
- Less particulates than diesel contributing to improved air quality
- No risk of fines for diesel spillage
- Non-carcinogenic



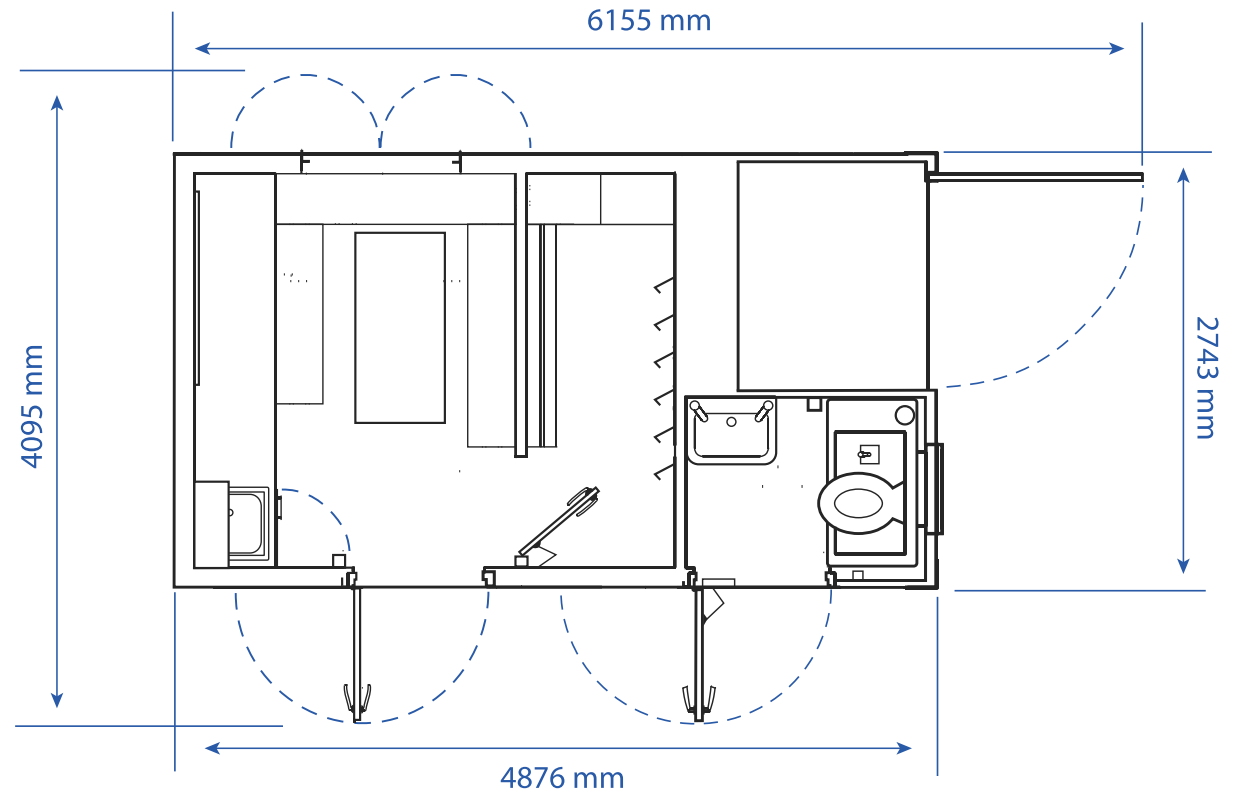
Specification

Unit size.....	4.88m x 2.74m (16' x 9")
Operational area	6.16m x 4.1m (20' x 13' 6")
Height (Levelling legs closed)	2.5m
Weight	5 Tonnes
Water capacity	400ltr main tank + 2 x 20ltr drinking water containers
LPG	2 x 47kg cylinders
Rate of energy conversion	135grams of LPG per kW/H (average)
Generator	5.8kVA LPG fuelled (0.8 power factor)
Water heater.....	LPG fuelled Oasis heater
Additional equipment	Furniture, fire extinguisher, kettle, microwave oven and notice board
Toilet.....	Flushing toilet and hand wash basin





Find your Oasis



Useful points to remember

Terms of hire

- Full Terms & Conditions at www.advante.co.uk/terms-and-conditions
– No other terms will be accepted without prior written agreement from Advanté

Daily checks

- The client is responsible for the required daily checks on the generator, including engine oil as per manufacturer's recommendations. This is normal practice with any mechanical plant.
- Any damage arising from failure to carry out the checks will be charged.

Damage

- Damage and shortages will be charged to the client.

Levelling

- The unit will be levelled upon delivery, and the client is responsible for maintaining the unit in a level position at all times. Failure to do so could result in engine damage.

Permissible load on the unit

- Available power after appliances and services is 500 Watts for client use. Drawing or trying to draw more than this will damage the generator.

LPG

- The client is responsible for changing the bottles as required.

Canteen electrical equipment

- Both the microwave and kettle within the unit will be delivered to site PAT tested.

Water refills

- These are the client's responsibility, but can be arranged by Advanté if required. (Price on application.)

Waste

- Only normal toilet waste must be put in the toilet. Any contamination of the waste could result in additional disposal charges for the client.

Instruction Manual

- Full instructions on how to get the best from your unit and its operation can be found in the unit.

