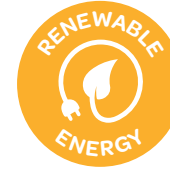


# TOILETS solarGO

3 cubicles • 2 toilets • 1 urinal



100% Silent

Self-contained  
Toilet Block

Instant Start  
Facilities

Generator Free  
Solar Hybrid  
Power



Solar Power



Energy Storage



Low Carbon



Silent



Inclusive

Oasis®

3 cubicles • 2 toilets • 1 urinal

Oasis® SolarGo Toilets offer 100% silent and generator-free instant start toilet facilities. Helping you to provide high quality welfare, while reducing emissions, and both environmental and community impact.

This completely self-contained toilet block has three separate cubicles comprising of two toilets and one separate urinal, for up to 30 staff on site. It uses renewable energy to power all electrical loads in the unit. Minimal LPG is used to heat the boiler.



### Health & safety



- Fully HSE compliant
- Cater for large numbers on site
- Silent toilet block
- Temperature controlled taps
- Low level lifting eyes

### Wellbeing



- No noise and no generator promotes staff wellbeing
- Pleasant welfare environment
- Individual cubicles provide inclusive toilet facilities

### Carbon footprint



- 100% renewable electrical power
- Impressive carbon savings
- Solar gain achievable all-year-round
- Surplus energy storage

### Social



- Silent welfare = happy neighbours
- High quality welfare promotes positive image of construction
- Inclusive welfare facilities retain and attract workforce diversity

### Air quality



- Clean renewable energy = cleaner air
- Solar and LPG power system
- Low carbon emissions
- No generator particulates

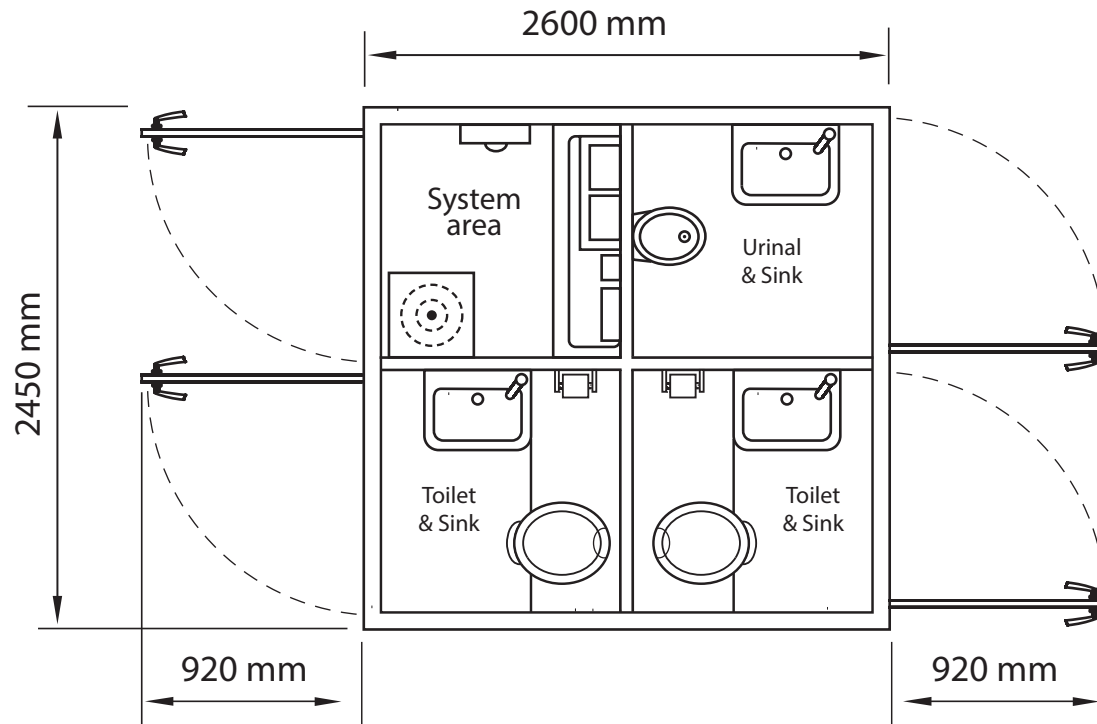
### Welfare costs



- Reduced fuel costs
- Increased solar input
- No generator related costs
- Improved energy performance



3 cubicles • 2 toilets • 1 urinal



## Useful points to remember

### Terms of hire

- Full Terms & Conditions at [www.advante.co.uk/terms-and-conditions](http://www.advante.co.uk/terms-and-conditions)  
 – No other terms will be accepted without prior written agreement from Advanté.
- The SolarGo Toilet Block is mechanical plant.

### Daily checks

- The client is responsible for the required daily checks on the unit. This is normal practice with any mechanical plant.
- Any damage arising from failure to carry out the checks will be charged.

### Damage

- Damage and shortages will be charged to the client.

### Levelling

- The unit will be levelled upon delivery, and the client is responsible for maintaining the unit in a level position at all times. Failure to do so could result in engine damage.

### Waste

- Only normal toilet waste must be put in the toilet. Any contamination of the waste could result in additional disposal charges for the client.

### Instruction Manual

- Full instructions on how to get the best from your unit and its operation can be found in the unit.

## Unit specification

Unit Size	2.45m x 2.60m (8ft x 9ft)
Height	2.5m (8ft)
Weight (effluent emptied)	2000kg
Operational Area Required	2.45m x 4.44m (8ft x 15ft)
No of Lights	4
Effluent Tank	300ltrs / 66gals
Water Tank	210ltrs
Tower Dispenser	3
Soap Dispenser	3

<b>Personnel Capacity</b>	Two toilets, one urinal, three washbasins
Men only (max)	30
Mixed or Women (max)	25
<p>Areas must be reserved for men <b>OR</b> women only. Therefore the capacity for your application must be calculated taking this into account.</p> <p><i>Figures quoted are from HSE guidelines and were correct at time of going to press.</i></p>	