

Scope

The scope of this General Method Statement is to provide an advisory document to confirm a sequenced statement of work for our arrival on site and delivery of an Advanté SolarGo Toilet Unit in conjunction with client managed resources and site lifting plan requirements.

Our planning and controls have been developed in accordance with BS7121: 2016 Part 4 covering the provision of Hired & Managed Lifting operations in accordance with client Lifting Plans.

The sequencing outlined provides guidance on each step of this process from arrival on site, interaction with site resource, positioning of the vehicle for lifting and exiting the site post completion of the delivery.

In preparation for the new Civil Aviation Authority CAP 1096 Guidance Implementation which will occur not earlier than 1st April 2022, please notify Advanté Ltd if there are Aerodromes, Helipads or Private Landing Strips in the vicinity of the location of the enquiry and Advanté Ltd can advise on the notification process that the CAA will expect the Crane user to comply with based on the document link below.

<https://www.cpa.uk.net/news/caa-cap-1096-guidance-for-crane-users-and-associated-cpa-tin>

Collection of the Advanté SolarGo Toilet Unit will follow the same process. This may require interaction with Advanté in advance of the planned collection date with the site resource to highlight any differences in site conditions and access that have taken place after the original delivery.

We will ensure that all lifting information including records of competence and lifting equipment inspection and test are available for the client to review and assess on site.

Abbreviations used in this document.

LLCO – Lorry Loader Crane Operator

LLC – Lorry Loader Crane

C SM – Client Site Management referring directly to the receiver of this document

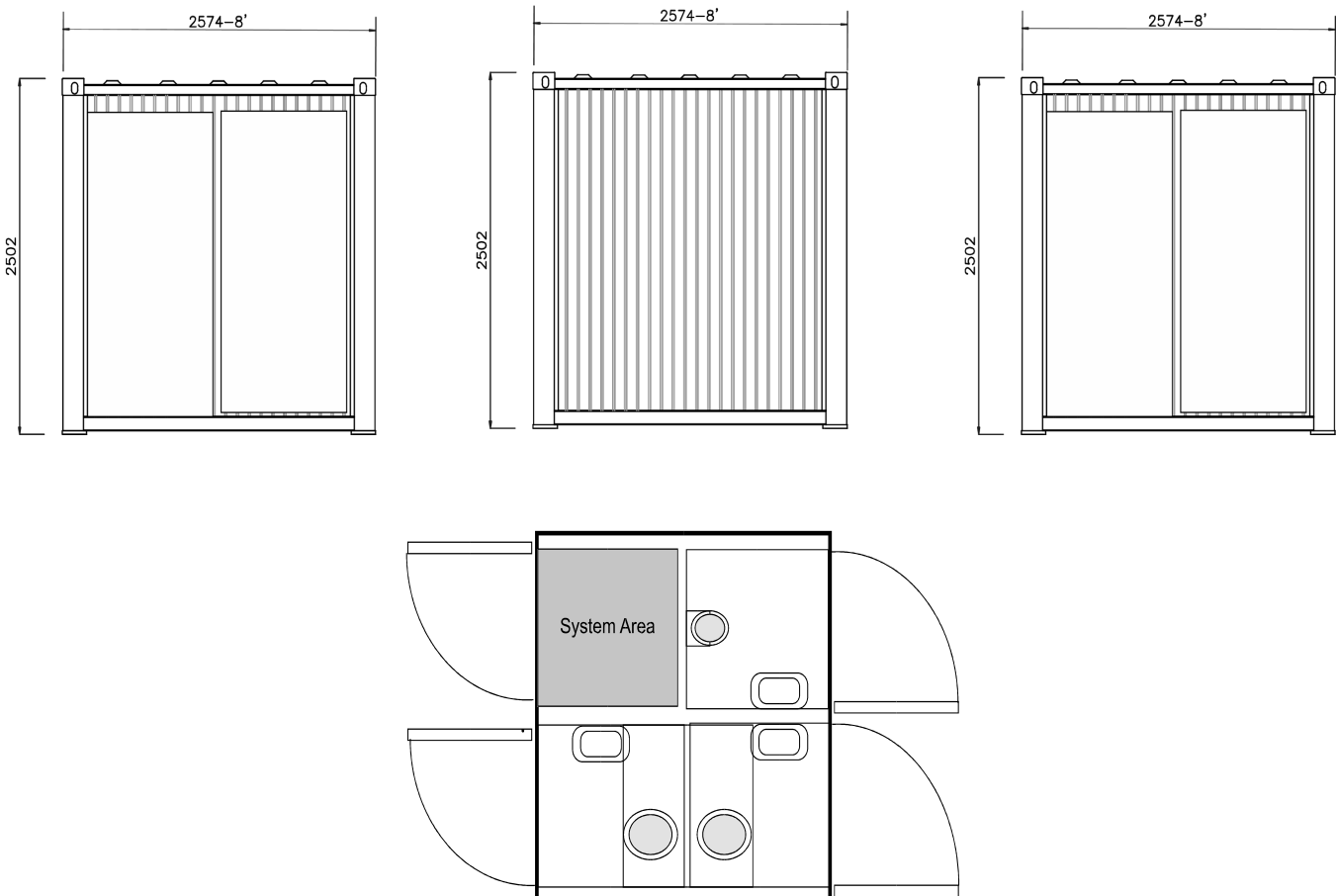
C Ops – Client Site Operatives organised by the C SM

RA – Risk Assessment

1. Details of Load/confirmation of lifting radius allowed for/Corner loadings for intended position

| | |
|------------------------------------|--|
| Weight (Inc attachments): | Advanté SolarGo Toilet Unit – 2000 Kgs delivered with Fresh Water NB – Maximum commissioned weight with Fresh and Wastewater Tank's full is 2400 kg. |
| Dimensions: | 8 X8 Ft Unit = L2.574 x W 2.574 M x H2.502 M |
| Height of Lift: | 11.65 Metres to top of Jib minimum clearance needed. |
| Max Radius: Position of C of G: | 20.0 Metres |
| | Lower position Lifting Lugs (Refer to the Photo below) positioned at the factory plus use of chain guides . Reasonable C of G for the Unit with adjustments if required made to the lifting tackle itemised. |

Unit layout



Corner loadings for the intended position/condition of the surface to be used.

Pressure on unit Jacklegs



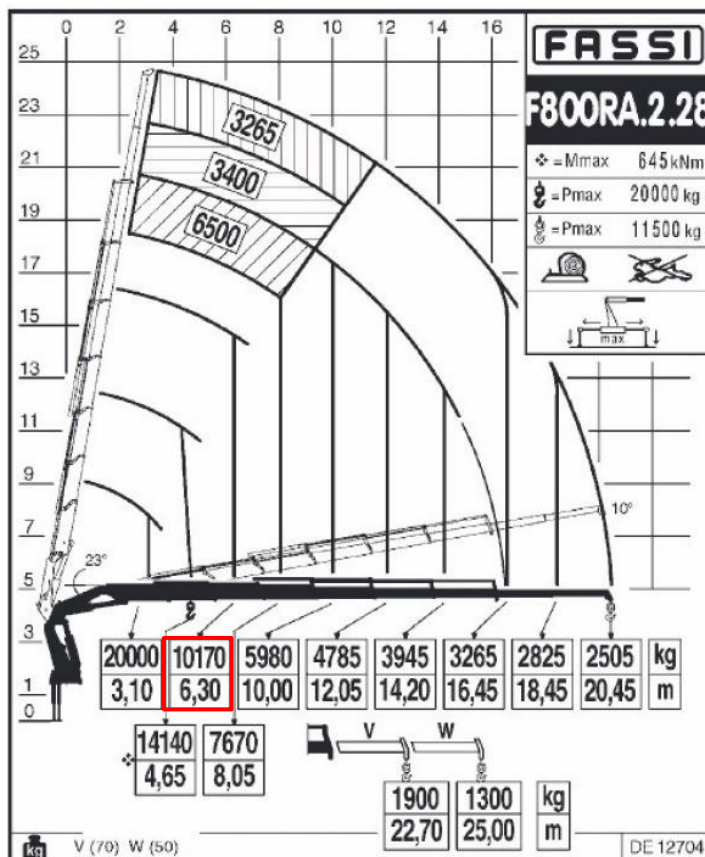
Calculation for Solar Toilet unit

| | | |
|-----------------|-------------------------------------|---------------|
| Load per leg | Solar Toilet unit 2.5m X 2.5m | 2000 kg |
| 500 | Total load to each corner pad in KG | |
| Base plate only | Corner Pad's size | 150 by 150 mm |

| | | |
|---------------|--|---|
| | Pressure under each corner pad in N/m² | |
| 500 | $M_L = \text{MASS OF TOTAL LOAD (KG)} -$ | |
| 4900 | FORCE AT FOOT (NEWTONS) PER LEG WITHOUT PAD'S | |
| 9.8 | $G = \text{FORCE OF GRAVITY (9.8 m/s}^2\text{)}$ | |
| 0.0225 | Foot pad | 0.15 X 0.15 metre |
| 217778 | Pressure under outrigger in N/m ² | |
| | DIVIDE F₁ BY AREA OF FOOT/PAD TO GIVE FORCE IN N/m² | |
| 218 | kN/m² | This is the pressure under one of the legs (the pair being equally loaded) at the generator end of the unit, which is therefore maximum load on any one jackleg of the 4 on the unit. |

2. Details of Vehicle/Crane

| | |
|---|---|
| Make & Model: | Rigid Scania 8 x 2 with 72.17 Te Metre Class Fassi F800RA 2.28 Lorry Loader Crane |
| Capacity: | 65.75 Te/Metre |
| Outrigger Spread Centres: | Left to Right (X) Max 8.3 Metre Front to Back (Y) 7.3 Metres |
| Force through Outrigger Piston. | 78.75 Newton's – Refer to Page 7 |
| Standard Mat/Pad Size: | 800 mm Diameter Nylon Discs = 0.502 Sq M |
| Additional Outrigger Mat's available at additional cost: | Please refer to the quotation provided - 1.5 M x 1.2 M available. |
| Final maximum distributed Outrigger Load with standard Mat: | 16 Tonne M Sq – Refer to Page 7 |
| Gross Rigged Weight: | Maximum 28,500 Kgs |





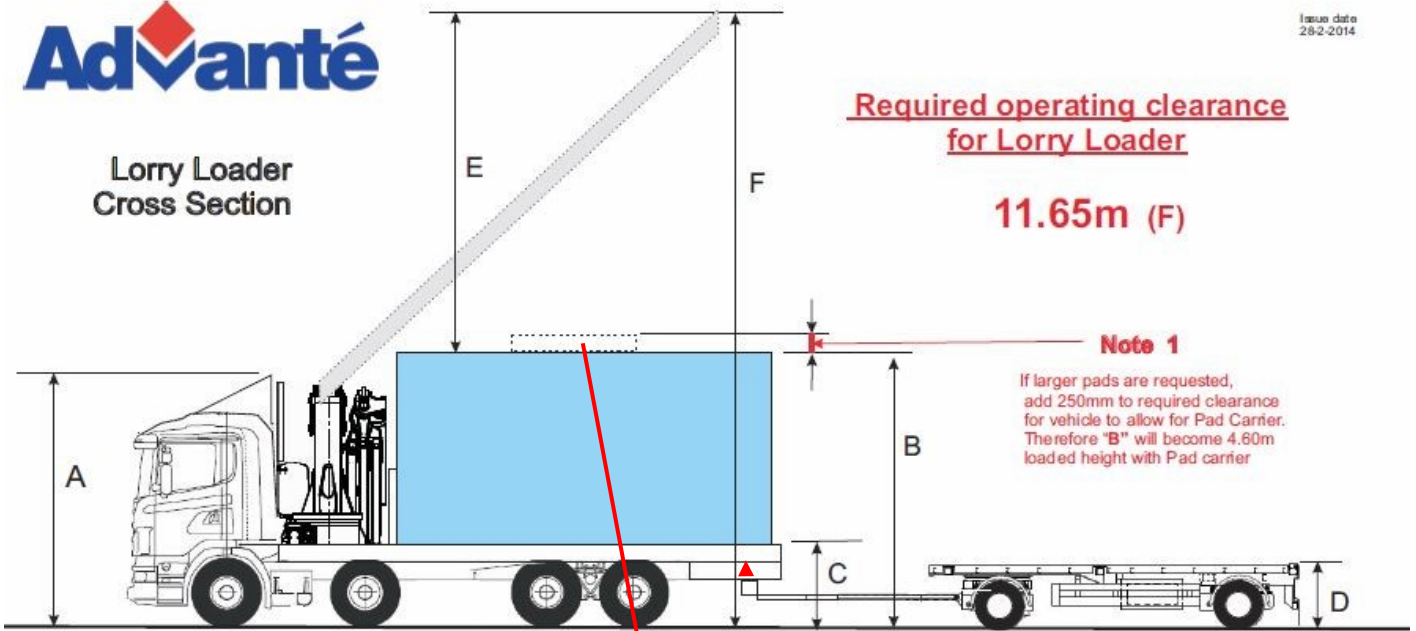
Lorry Loader Cross Section

Required operating clearance for Lorry Loader

11.65m (F)

Note 1

If larger pads are requested, add 250mm to required clearance for vehicle to allow for Pad Carrier. Therefore "B" will become 4.60m loaded height with Pad carrier



| Lorry Loader height above Load | | | | | H |
|--------------------------------|------------------------------------|--------------------|---|---------------------------|---|
| Unit Length (m) (2.7m wide) | Crane structure Top to Hook (m) | Master link (m) | Height to master link from unit roof (m) | Movement allowance (m) | Minimum height required above unit (m) |
| 4.8 | 1.5 | 0.4 | 2.4 | 0.5 | 4.8 |
| 6.3 | 1.5 | 0.4 | 3.2 | 0.5 | 5.6 |
| 7.3 | 1.5 | 0.4 | 3.7 | 0.5 | 6.1 |
| 9.8 | 1.5 | 0.4 | 4.9 | 0.5 | 7.3 |

Lorry dimensions

- A 4.10m unloaded running height
- B 4.35m loaded height to top of unit
- C 1.25m lorry deck
- D 1.10m trailer deck

Note on B This is height for our highest unit (3.1m) other models are lower 2.65m so dimension **A** then becomes the critical access measurement. (See Note 1 in red)
Note on F Clearance required varies according to unit size. See Table column **H** for specific dimension and add dimension **B** to **H** to obtain model specific value of **F**.

Larger Mats below available at additional cost on the quotation provided.



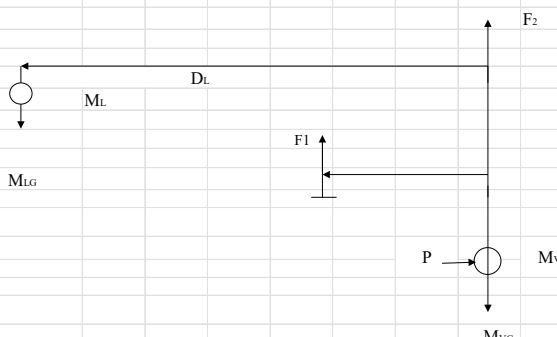
| | |
|---------------------------|--|
| Weight (inc attachments): | Abel Trailer – 4000 Kgs |
| Dimensions: | L 6 M x W 2.55 M x H 1.2 M |
| Height of Lift: | 15 Metres to top of Jib minimum clearance needed. |
| Max Radius: | 12.05 Metres SWL Crane 4705 Kgs. |
| Position of C of G: | Lifting Lugs fabricated/positioned at the factory to be used as per the Photo below. |



3. Ground Conditions

| | |
|-------------------|---|
| Access/Egress: | Otherwise, suitable for vehicle configuration detailed, uninterrupted, hazard free to low-risk area UNDER escort from a Client Site Operative/Banksman. NB. The Lorry Loader Crane Operator has the right to raise any issues on arrival. |
| Lifting Position: | Client to prepare the ground if required/accept the vehicle weight and distributed outrigger load for the standard Outrigger Mats confirmed. Suitable for uninterrupted, hazard free to low-risk area. |

PRESSURE UNDER OUTRIGGER FOOT/PAD CALCULATION



M_L = MASS OF LOAD (KG) –
 M_V = MASS OF VEHICLE (KG)
 D_F = DISTANCE FROM C/L OF COLUMN C/L OF FOOT (METRES) –
 D_L = DISTANCE FROM C/L OF COLUMN TO C/L OF LOAD (METRES) –
 (this is the maximum distance D_L will be.)
 F_1 = FORCE AT FOOT (NEWTONS)
 F_2 = FORCE AT VEHICLE (NEWTONS)
 G = FORCE OF GRAVITY (9.8 m/s^2)
 FORMULA FOR FORCE AT C/L OF FOOT, AS PARTICLE FORCE IS AS FOLLOWS:

$$F_1 = \frac{M_L \cdot G \cdot D_L}{D_F}$$

 DIVIDE F_1 BY AREA OF FOOT/PAD TO GIVE FORCE IN N/m^2

Calculation for Solar toilet 2.5 X 2.5 M

Don't forget the king post on most cranes is offset so for maximum Outrigger extension the longest measurement is from the centre of the vehicle to the centre of the outrigger lift ram plus the offset. If you enter the loaders maximum lift at maximum extension this will give you the maximum pressure on an outrigger pad for any weight /radius combination possible on that vehicle


| Data Table input | Enter information in yellow squares |
|------------------|--|
| 20 | Radius of lift from crane centre (D_L) in Metres (example 3.45) |
| 2400 | Total weight of lift including chains or other lifting equipment (M_L) in KG |
| 4.39 | Out rigger extension (D_L) in metres, plus distance to centre of king post in Metres |
| Pad size | Pad's under out riggers 800 Diameter mm |

Don't forget if you want to calculate the load on the pad at less than the maximum loader lift at a radius the total weight of a lift equals Load plus lifting equipment

| Pressure under outrigger in N/m^2 | |
|--|---|
| 2400 | M_L = MASS OF TOTAL LOAD (KG) – M_V = MASS OF VEHICLE (KG) |
| 4.39 | D_F = DISTANCE FROM C/L OF COLUMN C/L OF FOOT (METRES) – |
| 20 | D_L = DISTANCE FROM C/L OF COLUMN TO C/L OF LOAD (METRES) – (this is the maximum distance D_L will be.) |
| 107152.62 | F_1 = FORCE AT FOOT (NEWTONS) F_2 = FORCE AT VEHICLE (NEWTONS) |
| 9.8 | G = FORCE OF GRAVITY (9.8 m/s^2) |
| 0.5024 | Foot pad 0.8 M Diameter equals 0.5024 M² |
| 213281 | Pressure under outrigger in N/m^2 DIVIDE F_1 BY AREA OF FOOT/PAD TO GIVE FORCE IN N/m^2 |

| | | |
|-----|-------------------|---|
| 213 | kN/m ² | This is the pressure under the leg with shortest distance from the crane centre when fully extended at maximum load , therefore the maximum pressure on any leg |
|-----|-------------------|---|

19-11-2010 ver3



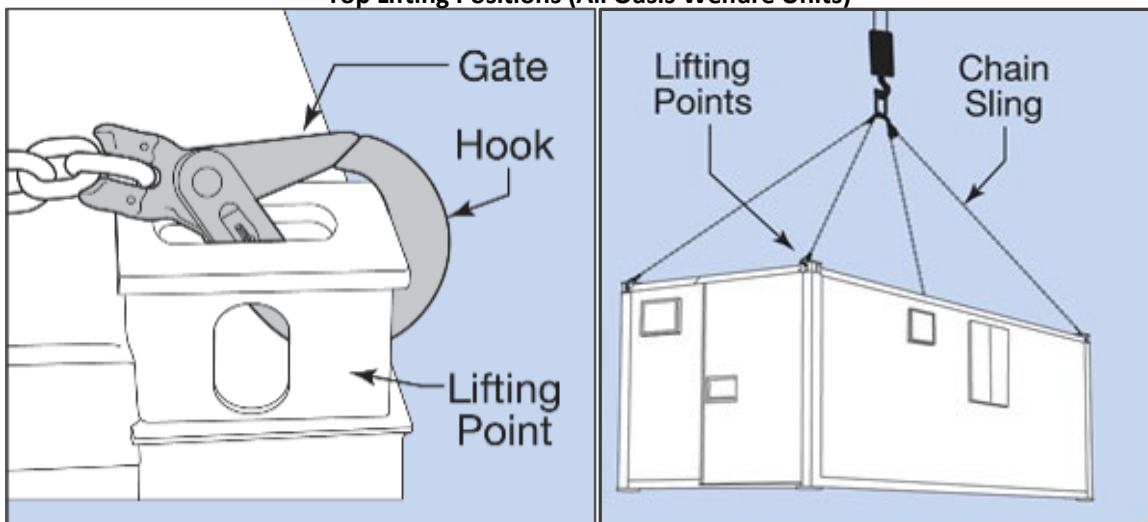
4. Lifting Accessories

| | |
|---|-----------------------|
| Slings (Rope): N/A | Slings (Webbing): N/A |
| Slings (Chain): 1 No Set of 4 Leg 7 Metre Chain Brothers minimum combined SWL 8.4 Te per set fitted with Safety Hook's suitable to lift the SolarGo Toilet Unit | Shackles: N/A |
| Other Accessories Used: N/A | |

Lower lifting positions on the SolarGo Toilet Unit – Refer to Section 1 Page 2 product details



Top Lifting Positions (All Oasis Welfare Units)



5. Hazards to be considered and assessed by Clients Site Management and confirmed prior to delivery.

| Proximity Hazards | Present? | Proximity Hazards | Present? |
|--------------------------|--------------------------|-------------------------------|----------|
| Overhead Power Lines | | Hazardous Chemicals/Materials | |
| Other Overhead Obstacles | | Confined working Area. | |
| Underground Services | | Restricted Access - Width | |
| Excavations | | Restricted Access - Height | |
| Unstable/Soft Ground | | Other Vehicles | |
| Slinging Difficulties | Refer to Section 7 below | Adjacent to Railway Line | |
| Other Hazards Identified | | | |

6. Operational Requirements

Fall Arrest System with Auto-Descender in place for Working at Height procedures.

Lorry Loader Crane Operator will operate the Lorry Loader Crane via a Waist positioned Remote Control Console working to client management approval and with client nominated operatives.

If necessary, the Lorry Loader Crane Operator can operate alone using Remote Control Console under strict control procedures to be assessed and informed to the Client. Refer to Risk Assessment Section 13

7. Customer Provisions

Client to organise and maintain all traffic control, demarcation of the working area, control of the Lorry Loader Crane and other traffic for access/egress, preparation of suitable area to receive the Welfare Unit(s), freely available induction if required and all welfare/operation support of Advanté staff while on site.

Client to also provide a minimum 1.5 Metre clearance around the base of the Vision 11 Unit required to detach the Lifting Chains from either the lower-level Lifting Lug's or to allow safe positioning of the Ladder to gain access to the top corner lifting positions dependent on use. Please consider and advise if this could be a problem.

8. Personnel:

| Title | Responsibility | Required PPE |
|--|--|--|
| Crane Supervisor – To be provided by Client/Site Manager | Oversee all below. | Hi-Vis Waist Coats or Jackets BSEN471 Toe Protection Safety Boots BSEN 346 Gloves BS1651 Safety Glasses/Goggles DIN EN166 Hard Hat BSEN 397 |
| Slinger/Signaller Combined Role with Crane Operator | Attach/detach Lifting Chains to and from the Welfare Unit, signal the movement of the crane and load on the Crane Hook with assistance from client nominated site operatives restraining the Tag Lines | Hi-Vis BSEN471 or Jackets BSEN471 Harness – Advante Operatives use a Cradle Harness BSEN 361:2002. External Re-Hired Operatives may use alternative specifications to minimum BSEN 361 Inertia Reel BS EN 360:2002 Toe Protection Safety Boots BSEN 346 Gloves BS1651 Safety Glasses/Goggles DIN EN166 Hard Hat BSEN 397 |
| Lorry Loader Crane Operator | Correct operation of the Lorry Loader Crane in accordance with the manufacturer’s instructions | Hi-Vis BSEN471 or Jackets BSEN471 Toe Protection Safety Boots BSEN 346 Gloves BS1651 Hard Hat BSEN 397 Safety Glasses/Goggles DIN EN166 |

9. Lifting Accessories

The lifting accessories will be provided by Advanté Ltd and supported by valid Certificates of Thorough Examination.

10. Weather Conditions

The lifting operation can only take place if the weather conditions are within the limits recommended by the crane manufacturer of a maximum 13.9 M/S less an allowance for the surface area of the Welfare Unit to be lifted.

Wind speeds measured by handheld Anemometer – These devices are used for indication purposes only.

11. Ground Conditions

It is the Client's responsibility to check before the lift is undertaken to determine that the ground is suitable and as such Advanté Ltd. will not be responsible for any liabilities and / or damage to surfaces that arise from the ground conditions not being suitable to allow access / egress and lifting operations to be carried out.

12. Trading Conditions

CPA., FTA.

13. Lifting Conditions

CPA Supplementary Conditions Applicable to Mobile Cranes (Wheeled & Crawler Mounted) 2011

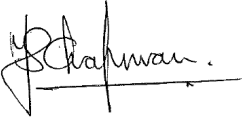
Sequence of Works

- Note *The Advanté Delivery & Collection RAMS supporting these works accompanies this Method Statement and will be valid at the point of undertaking site activities – this document is subject to regular changes and the current version will always be provided at the point of service delivery.*
- 1 Arrive at site and the Lorry Loader Crane Operator (LLCO) will report to the Client Site Management (C SM) at the pre-arranged time above for traffic guidance and receive any updates to previously advised controls relevant to current site conditions.
 - 2 The LLCO will make available all Crane, Lifting Tackle, Harness and personnel/training documentation to the C SM and with the assistance from the C SM, this will be entered the Site/Safety Inspection Register prior to any work commencing.
 - 3 The LLCO will liaise with the C SM and nominated Client Site Operatives (C Ops) in respect of demarking and controlling the safe working area for the operation of the Lorry Loader Crane (LLC) and the unloading activities corresponding with the maximum unloading radius confirmed in Section 1 Page 2. Note in the absence of input from the C SM/C Ops, the LLCO will define the safe working area and Mark Out using Hatched Tape and display Hazard Warning Beacons/Lights on the LLC throughout the operation.
 - 4 With C SM approval to proceed and displaying Hazard Warning Beacons, the LLC will now enter the site under guidance from C Ops.
 - 5 The LLCO and C SM will verify that no additional hazards are present within the lifting position at both ground level and overhead and that all conditions have been met as set out in the Risk Assessment & Method Statement. The LLCO will check that a safe clearance will be available to position the Pre-Inspected Ladder for the Working at Height procedures required. Refer to Section 7 Page 9.
 - 6 The LLCO to then attend (if required) the Site Induction and C SM will issue the Permit to Lift and if required, a Permit for the Use of Ladders. Included in the Induction will be the location of the nearest A & E Hospital and Non-Emergency Medical Centre, and this will be included in the Action Plan to be confirmed by the C SM.
 - 7 With C SM approval to proceed, the LLCO will then recheck that the isolated area remains clear and from an operating position on each side of the LLC, extend the Crane Stabiliser Beams to the maximum width, recheck for the position of any Utility Covers/changes in the surface to be set up on and position the standard Outrigger Mats carried on the LLC.
 - 8 The LLCO will then extend the Outrigger Rams to stabilise the Crane ensuring the Wheels are in contact with the ground, the suspension is not completely unloaded and carry out any pre-operational checks in accordance with the manufacturer's recommendations. NB. If the additional Outrigger Mats are requested and confirmed on the official order to be received, these are delivered on the Pad Carrier (Refer to Page 5 Diagram of the Lorry) positioned on the rear of the vehicle that does not require Working at Height procedures to be unloaded and positioned.
 - 9 The LLCO will check the weather conditions comply with the lifts to be carried out and select the Lifting Chain Leg Brothers required to lift the SolarGo Toilet Unit
 - 10 The LLCO will then control the Crane and carry out the motions required to position the Boom with the Lifting Chains above the SolarGo Toilet Unit for attachment to all Four lower position lifting points. Refer to the detail on Page's 2 and 8.

- 11 NOTES FOR TOP LIFTING POSITIONS ONLY IF REQUIRED – The Lifting Chains will then be attached to all Four corner lifting points via the use of a Pre-inspected Ladder (as per the RA) fitted with a Ground Level Stabiliser Bar and using a Harness and Fall Arrest as per the RA. The Ladder MUST be positioned on suitable level ground and Footed by C Ops.
- 12 Tag Line’s will then be attached to the EL Unit as deemed appropriate by the LLCO. The LLCO will carry out a visual check of the Lifting Chains/lifting positions, the position of the Crane Hook and check that all involved are ready and will be in a Visual or Audible position at all times throughout lifting the VL Unit.
- 13 With the C SM approval to continue, the LLCO will control the Crane to carry out the motions required to lift the VL Unit just clear from the transport position and STOP. The LLCO will check that the VL Unit has lifted in a level position and the Lifting Chains remain secure.
- 14 When the checks are completed, the LLCO will control the Crane and carry out the motions required to slew to the installation position required.
- 15 Prior to the Unit being lowered, a visual check of any hazards must be conducted including the positions of all personnel involved in the lifting operation and continued consideration given to any other activities on the perimeter of the isolated area.
- 16 Once clear/checks are completed, the SolarGo Unit can now be lowered into position and levelled using any C SM provided “Packing” that is required. Refer to the Page 3 Corner Loadings applicable to the SolarGo Toilet Unit being supplied.
- 17 The LLCO will now control the Crane to take the tension off the Lifting Chains that will then be detached from the Four lower lifting positions. The LLCO will then control the Crane to carry out the motions required to position the Lifting Chains clear of the SolarGo Toilet Unit to prevent the Lifting Chains from Snagging.
- 18 NOTES FOR TOP LIFTING POSITIONS ONLY IF REQUIRED – The Lifting Chains will then be detached from the Four corner lifting points via the use of the Pre-Inspected Ladder fitted with a Ground Level Stabiliser Bar and using a Harness and Fall Arrest as per the RA. The Ladder MUST be positioned on level ground and Footed by C Ops.
- 19 If the LLC is accompanied by a Trailer, to allow a safe and practical egress for the Trailer, the LLCO may use the Crane to either lift the Trailer and rotate 180 Degree’s in the direction of the egress route or load on to the LLC as shown in the Photo included in Page 6.
- 20 The Lifting Chains will be attached to the Lifting Rings fabricated into the Trailer and any working at height procedures to secure the Trailer on to the vehicle will be carried out using a Harness and Inertia Reel attached to the Crane Hook as per Sections 6 and 11 of the Risk Assessment.
- 21 On completion of the lifts required, the LLCO will then stow away the Lifting Chains used and complete the derig procedures of the Crane as per the manufacturers recommended instructions ensuring that the working area remains isolated whilst the individual Outrigger Pistons are rotated back into the vertical position and the Stabiliser Beams are retracted back into the vehicle for the travel position.
- 22 The LLCO will carry out checks in preparation to leave site and under guidance from C Ops, the LLC will be escorted back to the site gates and out on to the established road system to then leave safely in the direction required.



Hired & Managed Advisory General Method Statement – Advanté SolarGo Toilet Unit

| | |
|--|--|
| Document prepared and reviewed by: Stan Chapman Appointed Person Advante | Document reviewed and accepted by: Tony Hamilton, Advanté Operations Manager |
|  | |
| Date: 10- August 2023 | Date: |

